

Sr. No.	Question	Group
A)	Please confirm this is the first and only time you answer this survey pertaining to AY 2022-23.	Personal Info
B)	Gender:	
C)	What degree program were you pursuing in AY 2022-23?	
D)	In which class you were studying in AY 2022-23?	
E)	Enter your branch	
1	Are you satisfied with condition of Furniture & Fittings?	Classroom
2	Is lighting sufficient?. Express your satisfaction in %	
3	Is air ventilation appropriate? Express your satisfaction in %	
4	How Is the cleanliness? Express your satisfaction in %	
5	Are you satisfied with equipment availability?	Laboratory
6	Are you satisfied with computer and internet availability?	
7	How is the overall Lab maintenance? Express your satisfaction in %	
8	How is the behavior of staff? Express your satisfaction in %	
9	Are you satisfied with availability of books, journals and magazines?	Library
10	Are you satisfied with ease of access?	
11	How is the reading room environment? Express your satisfaction in %	
12	How is the behavior of staff? Express your satisfaction in %	
13	Are you satisfied with hygiene and cleanliness?	Canteen
14	Are you satisfied with menu choices and prices?	
15	Do you get timely delivery? - Express your satisfaction in %	
16	Are you satisfied with the response of office staff?	Other facilities / amenities
17	Are you satisfied with quality of auditorium / seminar halls?	
18	Are you satisfied with games and sports facilities?	
19	Are you satisfied with the availability of drinking water?	
20	Are you satisfied with the toilet facilities?	
21	Would you like to give any suggestion for improvement in facilities?	--



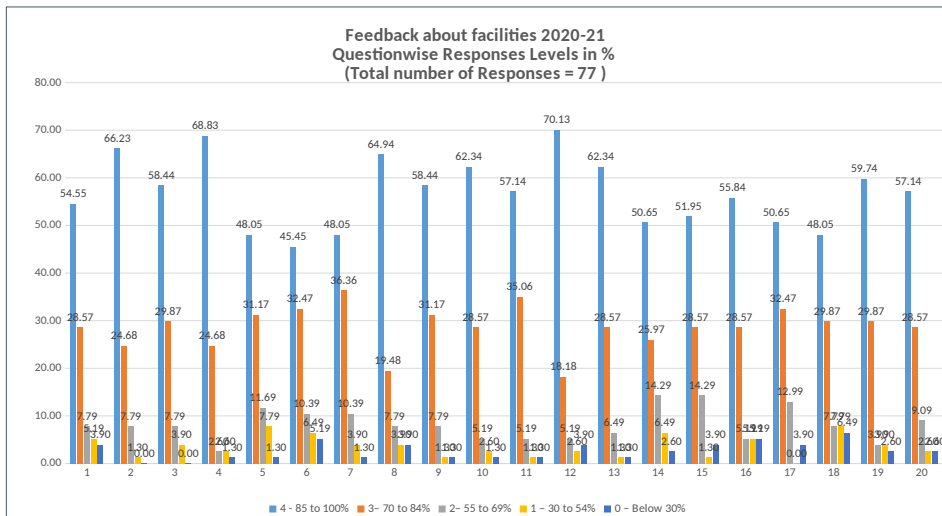
STAKE HOLDERS FEEDBACK

Structure of Google form for Survey of Feedback about facilities

2020-21

Level of Response	1	2	3	4	5	6	7	8	9	10	11	12	13	14	15	16	17	18	19	20
4-85 to 100%	42	51	45	53	37	35	37	50	45	48	44	54	48	39	40	43	39	37	46	44
3-70 to 84%	22	19	23	19	24	25	28	15	24	22	27	14	22	20	22	22	25	23	23	22
2-55 to 69%	6	6	6	2	9	8	8	6	6	4	4	4	5	11	11	4	10	6	3	7
1-30 to 54%	4	1	3	2	6	5	3	3	1	2	1	2	1	5	1	4	0	6	3	2
0-Below30%																				
	3	0	0	1	1	4	1	3	1	1	1	3	1	2	3	4	3	5	2	2
TOTAL	77	77	77	77	77	77	77	77	77	77	77	77	77	77	77	77	77	77	77	77

Level of Response	1	2	3	4	5	6	7	8	9	10	11	12	13	14	15	16	17	18	19	20
4 - 85 to 100%	54.55	66.23	58.44	68.83	48.05	45.45	48.05	64.94	58.44	62.34	57.14	70.13	62.34	50.65	51.95	55.84	50.65	48.05	59.74	57.14
3- 70 to 84%	28.57	24.68	29.87	24.68	31.17	32.47	36.36	19.48	31.17	28.57	35.06	18.18	28.57	25.97	28.57	28.57	32.47	29.87	29.87	28.57
2- 55 to 69%	7.79	7.79	7.79	2.60	11.69	10.39	10.39	7.79	7.79	5.19	5.19	5.19	6.49	14.29	14.29	5.19	12.99	7.79	3.90	9.09
1 - 30 to 54%	5.19	1.30	3.90	2.60	7.79	6.49	3.90	3.90	1.30	2.60	1.30	2.60	1.30	6.49	1.30	5.19	0.00	7.79	3.90	2.60
0 - Below 30%	3.90	0.00	0.00	1.30	1.30	5.19	1.30	3.90	1.30	1.30	1.30	3.90	1.30	2.60	3.90	5.19	3.90	6.49	2.60	2.60
TOTAL	77	77	77	77	77	77	77	77	77	77	77	77	77	77	77	77	77	77	77	77



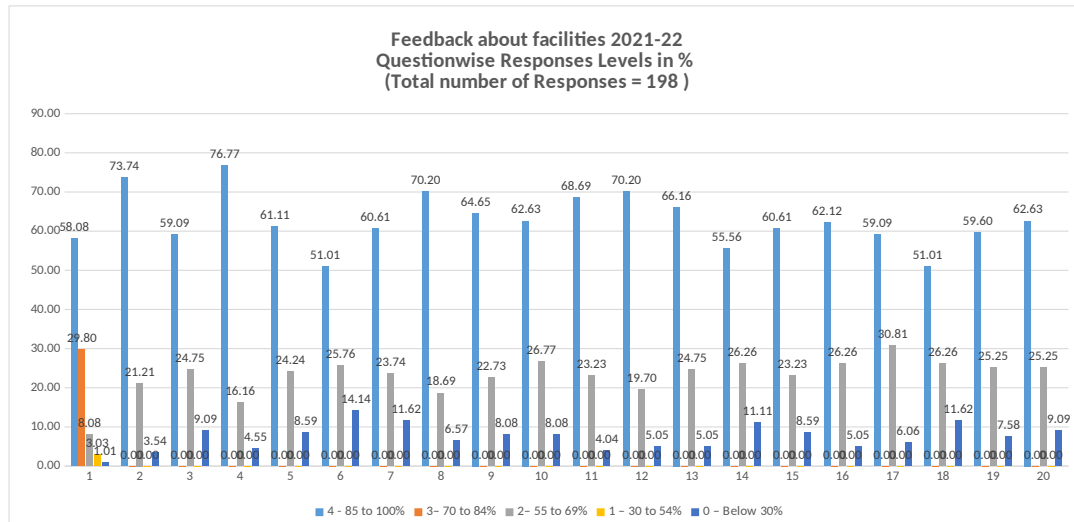


STAKE HOLDERS FEEDBACK

Structure of Google form for Survey of Feedback about facilities

Level of Response	1	2	3	4	5	6	7	8	9	10	11	12	13	14	15	16	17	18	19	20	
4-85to	100%	115	146	117	152	121	101	120	139	128	124	136	139	131	110	120	123	117	101	118	124
3-70to	84%	59	42	49	32	48	51	47	37	45	53	46	39	49	52	46	52	61	52	50	50
2-55to	69%	16	7	18	9	17	28	23	13	16	16	8	10	10	22	17	10	12	23	15	18
1-30to	54%	6	3	11	4	9	8	4	6	8	3	8	9	6	4	10	7	4	8	10	3
0-Below30%		2	0	3	1	3	10	4	3	1	2	0	1	2	10	5	6	4	14	5	3
TOTAL		198	198	198	198	198	198	198	198	198	198	198	198	198	198	198	198	198	198	198	198

Level of Responses	1	2	3	4	5	6	7	8	9	10	11	12	13	14	15	16	17	18	19	20
4 - 85 to 100%	58.08	73.74	59.09	76.77	61.11	51.01	60.61	70.20	64.65	62.63	68.69	70.20	66.16	55.56	60.61	62.12	59.09	51.01	59.60	62.63
3- 70 to 84%	29.80	0.00	0.00	0.00	0.00	0.00	0.00	0.00	0.00	0.00	0.00	0.00	0.00	0.00	0.00	0.00	0.00	0.00	0.00	0.00
2- 55 to 69%	8.08	21.21	24.75	16.16	24.24	25.76	23.74	18.69	22.73	26.77	23.23	19.70	24.75	26.26	23.23	26.26	30.81	26.26	25.25	25.25
1 - 30 to 54%	3.03	0.00	0.00	0.00	0.00	0.00	0.00	0.00	0.00	0.00	0.00	0.00	0.00	0.00	0.00	0.00	0.00	0.00	0.00	0.00
0 - Below 30%	1.01	3.54	9.09	4.55	8.59	14.14	11.62	6.57	8.08	8.08	4.04	5.05	5.05	11.11	8.59	5.05	6.06	11.62	7.58	9.09
TOTAL	198	198	198	198	198	198	198	198	198	198	198	198	198	198	198	198	198	198	198	198





STAKE HOLDERS FEEDBACK

Structure of Google form for Survey of Feedback about facilities

Level of Response	1	2	3	4	5	6	7	8	9	10	11	12	13	14	15	16	17	18	19	20
4 – 85 to 100%	195	244	218	262	190	193	207	252	214	234	246	259	244	169	208	226	214	168	228	216
3 – 70 to 84%	132	95	97	88	136	107	120	88	119	102	94	72	95	124	114	100	101	109	97	105
2 – 55 to 69%	31	21	36	12	29	44	27	18	20	23	20	25	19	55	35	29	40	63	25	30
1 – 30 to 54%	3	4	11	5	9	15	11	9	10	5	6	7	4	12	6	6	7	9	9	10
0 – Below 30%	6	3	5	0	3	8	2	0	4	3	1	4	5	7	4	6	5	18	8	6
TOTAL	367	367	367	367	367	367	367	367	367	367	367	367	367	367	367	367	367	367	367	367

Level of Responses	1	2	3	4	5	6	7	8	9	10	11	12	13	14	15	16	17	18	19	20
4 - 85 to 100%	53.13	66.49	59.40	71.39	51.77	52.59	56.40	68.66	58.31	63.76	67.03	70.57	66.49	46.05	56.68	61.58	58.31	45.78	62.13	58.86
3 – 70 to 84%	35.97	25.89	26.43	23.98	37.06	29.16	32.70	23.98	32.43	27.79	25.61	19.62	25.89	33.79	31.06	27.25	27.52	29.70	26.43	28.61
2 – 55 to 69%	8.45	5.72	9.81	3.27	7.90	11.99	7.36	4.90	5.45	6.27	5.45	6.81	5.18	14.99	9.54	7.90	10.90	17.17	6.81	8.17
1 – 30 to 54%	0.82	1.09	3.00	1.36	2.45	4.09	3.00	2.45	2.72	1.36	1.63	1.91	1.09	3.27	1.63	1.63	1.91	2.45	2.45	2.72
0 – Below 30%	1.63	0.82	1.36	0.00	0.82	2.18	0.54	0.00	1.09	0.82	0.27	1.09	1.36	1.91	1.09	1.63	1.36	4.90	2.18	1.63
TOTAL	367	367	367	367	367	367	367	367	367	367	367	367	367	367	367	367	367	367	367	367

