



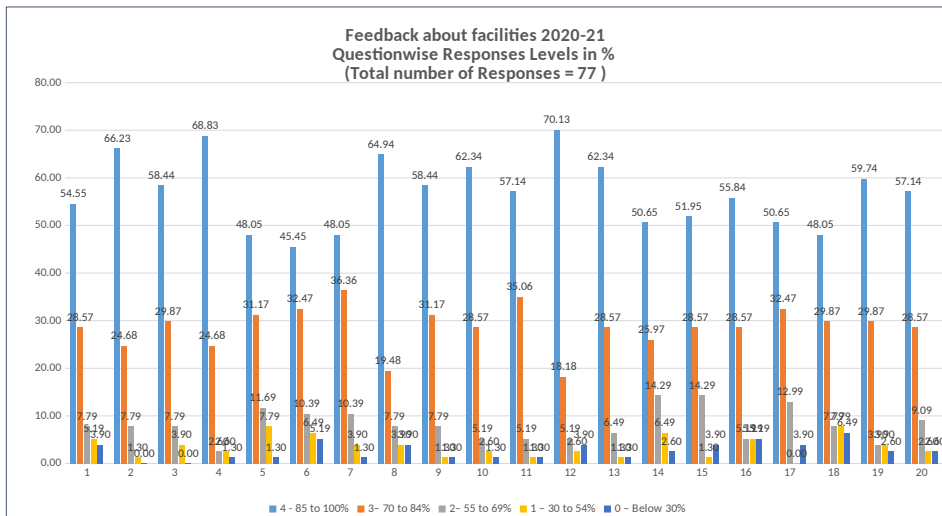
STAKE HOLDERS FEEDBACK

Structure of Google form for Survey of Feedback about facilities

2020-21

Level of Response	1	2	3	4	5	6	7	8	9	10	11	12	13	14	15	16	17	18	19	20
4-85 to 100%	42	51	45	53	37	35	37	50	45	48	44	54	48	39	40	43	39	37	46	44
3-70 to 84%	22	19	23	19	24	25	28	15	24	22	27	14	22	20	22	22	25	23	23	22
2-55 to 69%	6	6	6	2	9	8	8	6	6	4	4	4	5	11	11	4	10	6	3	7
1-30 to 54%	4	1	3	2	6	5	3	3	1	2	1	2	1	5	1	4	0	6	3	2
0-Below30%																				
	3	0	0	1	1	4	1	3	1	1	1	3	1	2	3	4	3	5	2	2
TOTAL	77	77	77	77	77	77	77	77	77	77	77	77	77	77	77	77	77	77	77	77

Level of Response	1	2	3	4	5	6	7	8	9	10	11	12	13	14	15	16	17	18	19	20
4 - 85 to 100%	54.55	66.23	58.44	68.83	48.05	45.45	48.05	64.94	58.44	62.34	57.14	70.13	62.34	50.65	51.95	55.84	50.65	48.05	59.74	57.14
3- 70 to 84%	28.57	24.68	29.87	24.68	31.17	32.47	36.36	19.48	31.17	28.57	35.06	18.18	28.57	25.97	28.57	28.57	32.47	29.87	29.87	28.57
2- 55 to 69%	7.79	7.79	7.79	2.60	11.69	10.39	10.39	7.79	7.79	5.19	5.19	5.19	6.49	14.29	14.29	5.19	12.99	7.79	3.90	9.09
1- 30 to 54%	5.19	1.30	3.90	2.60	7.79	6.49	3.90	3.90	1.30	2.60	1.30	2.60	1.30	6.49	1.30	5.19	0.00	7.79	3.90	2.60
0 - Below 30%	3.90	0.00	0.00	1.30	1.30	5.19	1.30	3.90	1.30	1.30	1.30	3.90	1.30	2.60	3.90	5.19	3.90	6.49	2.60	2.60
TOTAL	77	77	77	77	77	77	77	77	77	77	77	77	77	77	77	77	77	77	77	77



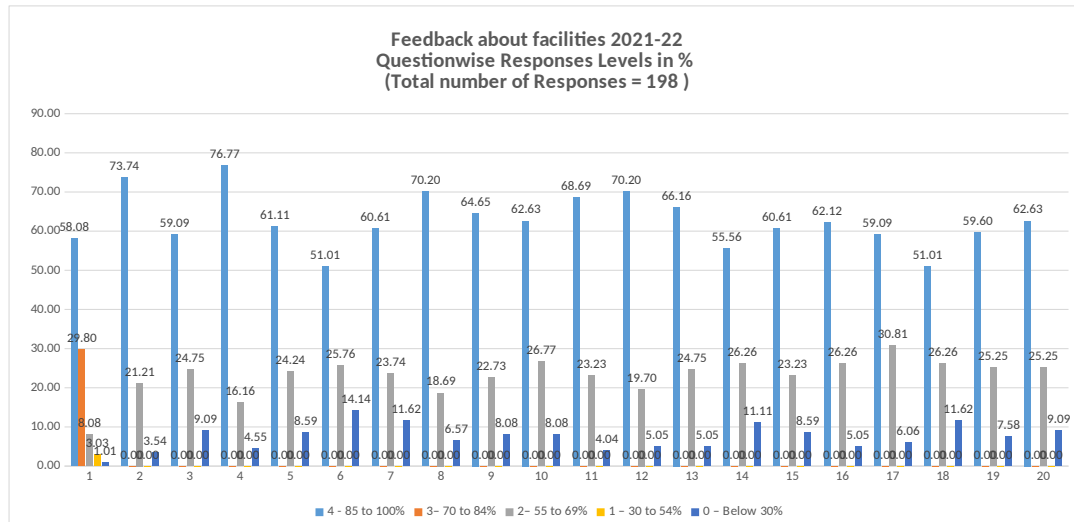


STAKE HOLDERS FEEDBACK

Structure of Google form for Survey of Feedback about facilities

Level of Response	1	2	3	4	5	6	7	8	9	10	11	12	13	14	15	16	17	18	19	20	
4-85to	100%	115	146	117	152	121	101	120	139	128	124	136	139	131	110	120	123	117	101	118	124
3-70to	84%	59	42	49	32	48	51	47	37	45	53	46	39	49	52	46	52	61	52	50	50
2-55to	69%	16	7	18	9	17	28	23	13	16	16	8	10	10	22	17	10	12	23	15	18
1-30to	54%	6	3	11	4	9	8	4	6	8	3	8	9	6	4	10	7	4	8	10	3
0-Below30%		2	0	3	1	3	10	4	3	1	2	0	1	2	10	5	6	4	14	5	3
TOTAL		198	198	198	198	198	198	198	198	198	198	198	198	198	198	198	198	198	198	198	198

Level of Responses	1	2	3	4	5	6	7	8	9	10	11	12	13	14	15	16	17	18	19	20
4 - 85 to 100%	58.08	73.74	59.09	76.77	61.11	51.01	60.61	70.20	64.65	62.63	68.69	70.20	66.16	55.56	60.61	62.12	59.09	51.01	59.60	62.63
3 - 70 to 84%	29.80	0.00	0.00	0.00	0.00	0.00	0.00	0.00	0.00	0.00	0.00	0.00	0.00	0.00	0.00	0.00	0.00	0.00	0.00	0.00
2 - 55 to 69%	8.08	21.21	24.75	16.16	24.24	25.76	23.74	18.69	22.73	26.77	23.23	19.70	24.75	26.26	23.23	26.26	30.81	26.26	25.25	25.25
1 - 30 to 54%	3.03	0.00	0.00	0.00	0.00	0.00	0.00	0.00	0.00	0.00	0.00	0.00	0.00	0.00	0.00	0.00	0.00	0.00	0.00	0.00
0 - Below 30%	1.01	3.54	9.09	4.55	8.59	14.14	11.62	6.57	8.08	8.08	4.04	5.05	5.05	11.11	8.59	5.05	6.06	11.62	7.58	9.09
TOTAL	198	198	198	198	198	198	198	198	198	198	198	198	198	198	198	198	198	198	198	198





STAKE HOLDERS FEEDBACK

Structure of Google form for Survey of Feedback about facilities

Level of Response	1	2	3	4	5	6	7	8	9	10	11	12	13	14	15	16	17	18	19	20
4 – 85 to 100%	195	244	218	262	190	193	207	252	214	234	246	259	244	169	208	226	214	168	228	216
3 – 70 to 84%	132	95	97	88	136	107	120	88	119	102	94	72	95	124	114	100	101	109	97	105
2 – 55 to 69%	31	21	36	12	29	44	27	18	20	23	20	25	19	55	35	29	40	63	25	30
1 – 30 to 54%	3	4	11	5	9	15	11	9	10	5	6	7	4	12	6	6	7	9	9	10
0 – Below 30%	6	3	5	0	3	8	2	0	4	3	1	4	5	7	4	6	5	18	8	6
<b>TOTAL</b>	<b>367</b>	<b>367</b>	<b>367</b>	<b>367</b>	<b>367</b>	<b>367</b>	<b>367</b>	<b>367</b>	<b>367</b>	<b>367</b>	<b>367</b>	<b>367</b>	<b>367</b>	<b>367</b>	<b>367</b>	<b>367</b>	<b>367</b>	<b>367</b>	<b>367</b>	<b>367</b>

Level of Responses	1	2	3	4	5	6	7	8	9	10	11	12	13	14	15	16	17	18	19	20
4 - 85 to 100%	53.13	66.49	59.40	71.39	51.77	52.59	56.40	68.66	58.31	63.76	67.03	70.57	66.49	46.05	56.68	61.58	58.31	45.78	62.13	58.86
3 – 70 to 84%	35.97	25.89	26.43	23.98	37.06	29.16	32.70	23.98	32.43	27.79	25.61	19.62	25.89	33.79	31.06	27.25	27.52	29.70	26.43	28.61
2 – 55 to 69%	8.45	5.72	9.81	3.27	7.90	11.99	7.36	4.90	5.45	6.27	5.45	6.81	5.18	14.99	9.54	7.90	10.90	17.17	6.81	8.17
1 – 30 to 54%	0.82	1.09	3.00	1.36	2.45	4.09	3.00	2.45	2.72	1.36	1.63	1.91	1.09	3.27	1.63	1.63	1.91	2.45	2.45	2.72
0 – Below 30%	1.63	0.82	1.36	0.00	0.82	2.18	0.54	0.00	1.09	0.82	0.27	1.09	1.36	1.91	1.09	1.63	1.36	4.90	2.18	1.63
<b>TOTAL</b>	<b>367</b>	<b>367</b>	<b>367</b>	<b>367</b>	<b>367</b>	<b>367</b>	<b>367</b>	<b>367</b>	<b>367</b>	<b>367</b>	<b>367</b>	<b>367</b>	<b>367</b>	<b>367</b>	<b>367</b>	<b>367</b>	<b>367</b>	<b>367</b>	<b>367</b>	<b>367</b>

